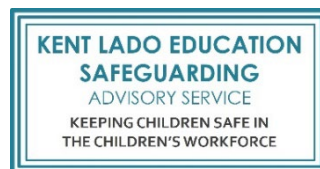


LADO Education Safeguarding Advisory Service (LESAS) Mission Statement

The County LADO service and Education Safeguarding Service merged in September 2024 following an evaluation of the two services. This decision aligns both services with the national 'Working Together to Safeguarding Children' agenda and will result in increased capacity to provide LADO and education safeguarding support to Kent education settings and the wider Children's workforce.



What we do

Our role is to continue and build upon the statutory LADO function for the whole of the children's workforce and support education settings (early years settings, childminders, schools, and colleges) in Kent who work with children aged 0-18 to meet their safeguarding responsibilities and respond to safeguarding concerns.

Our team is made up of experienced social work and education professionals who have a thorough understanding of key local and national legislation and statutory guidance related to safeguarding and education safeguarding practice.

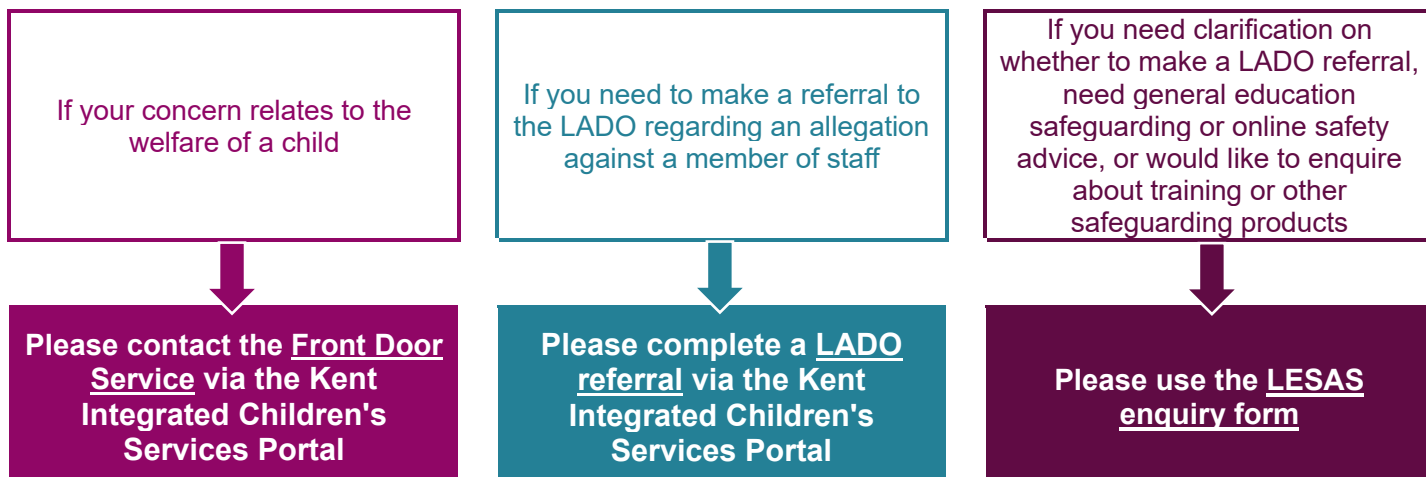
What we provide

We provide a variety of different types of support to education settings in Kent, this includes:

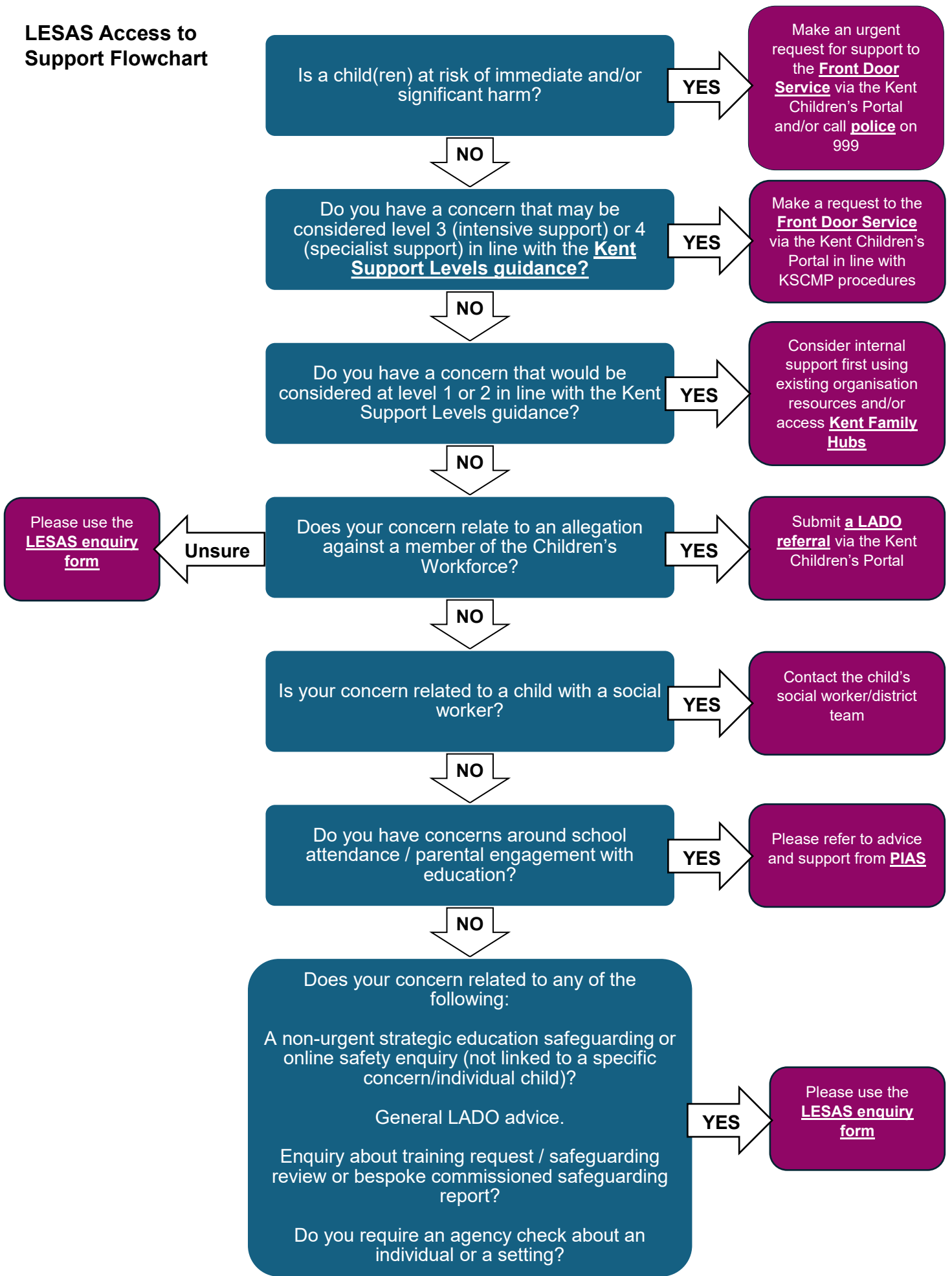
- Undertaking the LADO statutory function; primarily this involves managing the process when an allegation is made against a member of the children's workforce, not just education specific, in Kent.
- Advice for education settings on how they can meet their safeguarding responsibilities, including online safety specific advice, via an enquiries service. This does not include queries relating to individual children; in these cases, a request for support should be submitted to the Front Door Service.
- Up-to-date exemplar Child Protection policy and Acceptable Use Policy for education providers to adapt.
- Support for education settings in times of crisis and unexpected critical incidents, for example following the unexpected death of a child who attends the setting.
- A termly newsletter for Designated Safeguarding Leads (DSL) in education settings.
- Termly Designated Safeguarding Leads (DSL) 'catch up' meetings to share local information and guidance.
- Targeted outreach work and subsidised support for education settings following critical safeguarding needs.

The service can also be commissioned to provide a range of high-quality training and other safeguarding support products for DSLs and staff within the children's workforce, including safeguarding reviews which promote best practice and empower education settings to ensure their learners are as safe as they can be.

Contacting us



LESAS Access to Support Flowchart



Is a child(ren) at risk of immediate and/or significant harm?

YES

Make an urgent request for support to the **Front Door Service** via the Kent Children's Portal and/or call **police** on 999

NO

Do you have a concern that may be considered level 3 (intensive support) or 4 (specialist support) in line with the **Kent Support Levels guidance**?

YES

Make a request to the **Front Door Service** via the Kent Children's Portal in line with KSCMP procedures

NO

Do you have a concern that would be considered at level 1 or 2 in line with the Kent Support Levels guidance?

YES

Consider internal support first using existing organisation resources and/or access **Kent Family Hubs**

NO

Please use the **LESAS enquiry form**

Unsure

Does your concern relate to an allegation against a member of the Children's Workforce?

YES

Submit a **LADO referral** via the Kent Children's Portal

NO

Is your concern related to a child with a social worker?

YES

Contact the child's social worker/district team

NO

Do you have concerns around school attendance / parental engagement with education?

YES

Please refer to advice and support from **PIAS**

NO

Does your concern related to any of the following:
 A non-urgent strategic education safeguarding or online safety enquiry (not linked to a specific concern/individual child)?
 General LADO advice.
 Enquiry about training request / safeguarding review or bespoke commissioned safeguarding report?
 Do you require an agency check about an individual or a setting?

YES

Please use the **LESAS enquiry form**